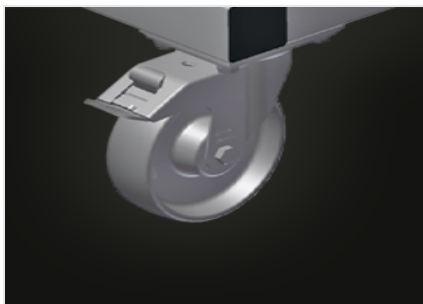


GF 1000

Transport and trolleys

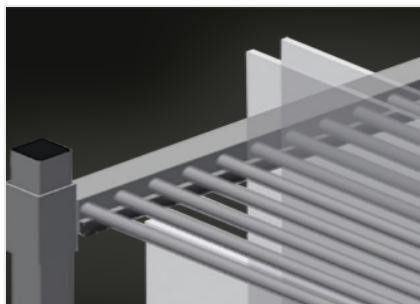


Glass transport trolley with sorting rack. Stable steel construction. Ideal for sorting glass. Hardwood supporting surface with felt. Compartment dividers for 20 sheets of glass. Compartment dividers height is adjustable. Four swivel castors, two of which with locking stop.



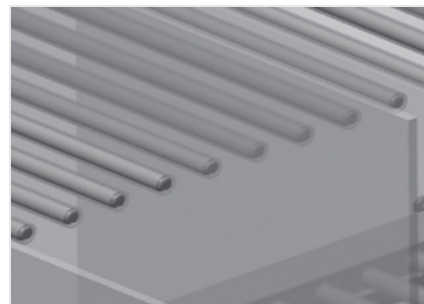
Casters

Four casters, two of which have a fixing brake, provide a high degree of mobility and easy, safe handling



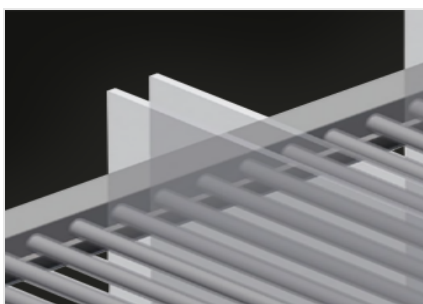
Compartment divider with plastic protection

Compartment divider height is adjustable. All supporting surfaces have a non-slip PVC cladding which protects sheets of glass from damage during storage



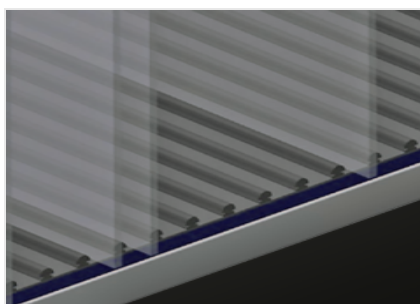
Easy loading and unloading

Well-organised storage provides quick access



Back support with rubber strips

Rear supporting surfaces equipped with rubber strips protect sheets of glass from damage



Bottom supporting surface of wood with felt

Lower supporting surface covered with felt. Additional plastic strips on the floor

GF 1000 / TRANSPORT AND TROLLEYS

DIMENSION AND WEIGHT

Length (mm)	1.180
Width (mm)	850
Height (mm)	1.360
Weight (kg)	95

STORAGE CAPACITY

Compartments	20
Clearance (mm)	30
Load capacity (kg)	400

CHARACTERISTICS

Swivel castors	4
Swivel castors with locking stop	2
Swivel castors diameter (mm)	125

Included ● Available ○