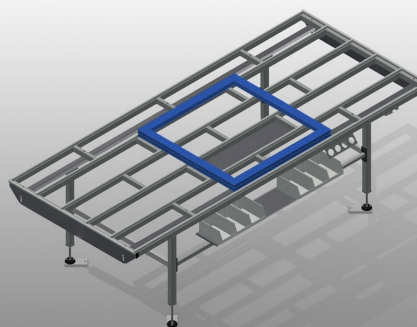
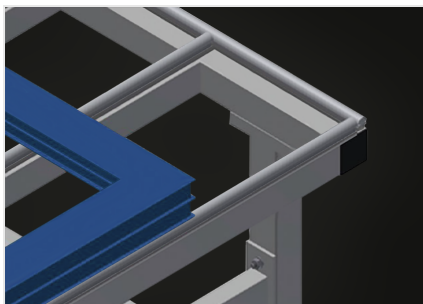


HT 3000

Assembly tables

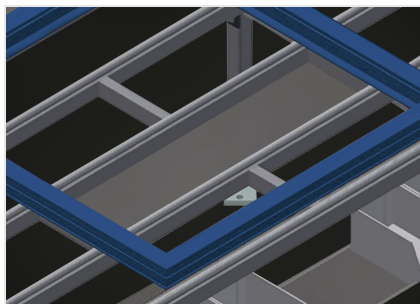


Horizontal table for all work tasks on frames and sashes. Stable steel construction. Assembly table for all work tasks on frames and sashes. Table supporting surface with plastic slide bars. Storage tray for setting down tools and accessories. Adjustable height. Simple installation with a modular system design. Options: also available with brush strips on request; also available with felt strips on request (for wooden elements); also available with rubber strips on request (for aluminium elements); roller support; tool rack; 4-fold compressed air supply; storage area with six plastic trays.



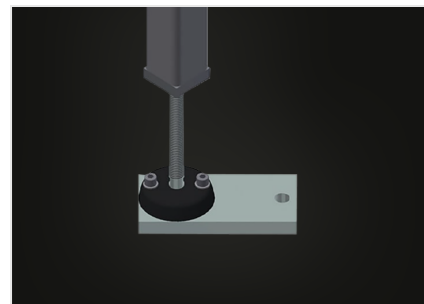
Supporting surfaces

Supporting surfaces with plastic slide bars



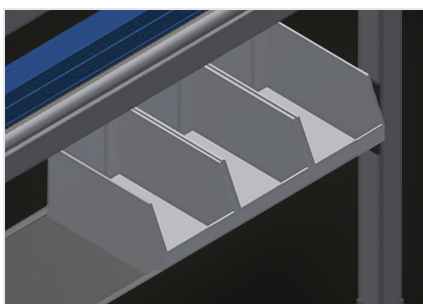
Storage tray

Storage tray for setting down tools and accessories



Height adjustment

Adjustable height; working height can be set to 850 - 1,000 mm by means of adjustable feet



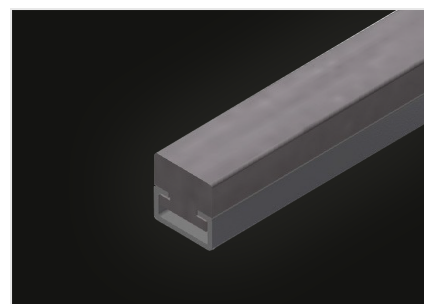
Storage area (Optional)

Storage area with 6 plastic trays for small accessories, hardware and screws



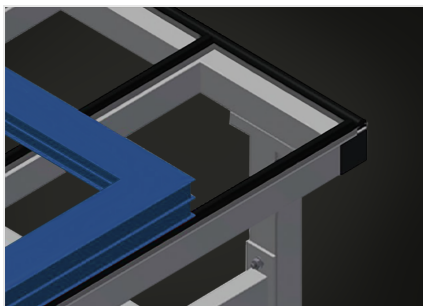
Brush strip (Optional)

Supporting surfaces with brush strip



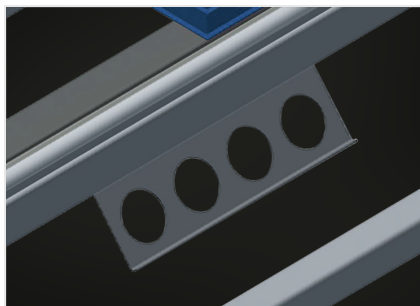
Felt strip (Optional)

Supporting surfaces with felt strip



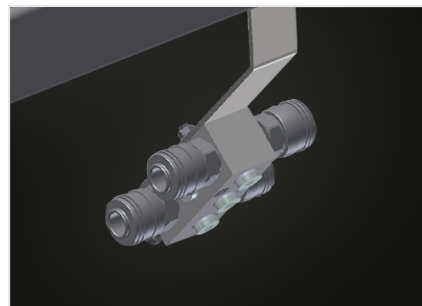
**Rubber strips
(Optional)**

Supporting surfaces with rubber-knob profile



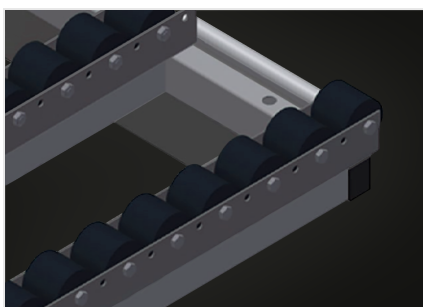
Tool rack (Optional)

Tool rack for pneumatic or electrical tools



**4-fold compressed air
connection (Optional)**

4-fold compressed air connection for connecting compressed-air tools



**Roller support cmpl.
(Optional)**

Hard plastic rollers with polyamide coating, on plain bearings, load per roller 60 kg, convenient for transport and handling of PVC elements

HT 3000 / ASSEMBLY TABLE

CHARACTERISTICS

Length (mm)	3.000
Width (mm)	1.300
Height (mm)	850 ÷ 1.000
Weight (kg)	120
Storage tray for setting down tools and accessories	●
Adjustable height	●
Table supporting surface with plastic slide bars	●
Table brush strip supporting surface	○
Table felt profile strip supporting surface	○
Table rubber knob profile	○
Roller support	○
Tool holder	○
4-fold compressed air supply	○
Storage tray	○

Included ● Available ○