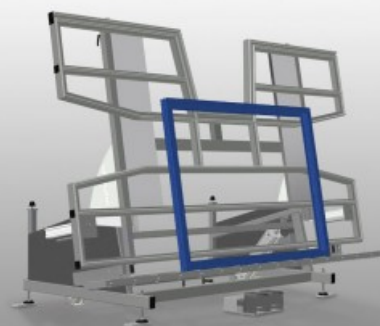


## *KTH 4000*

### Assembly tables



Assembly table for vertical and horizontal assembly. Stable steel construction. Important when switching from vertical to horizontal transportation and vice versa. Ideal for vertical and horizontal assembly. Infinitely variable intermediate positions for ergonomic working. Pneumatic tilting. Pneumatic vertical height adjustment. Table supporting surface with plastic slide bars. Roller support can be lowered pneumatically. Two lateral pneumatic clamps, (lowerable). 4-fold compressed air supply.



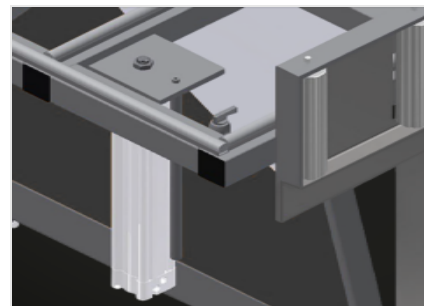
### Supporting surfaces

Supporting surfaces with plastic slide bars



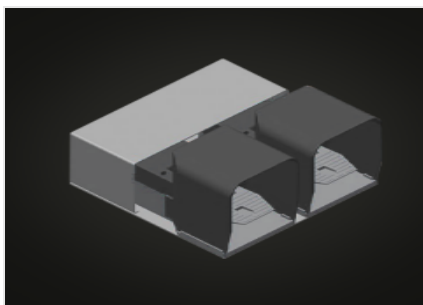
### Roller support

Roller conveyor can be lowered pneumatically to allow unhindered working in horizontal position; in vertical position, trouble-free onward transport is possible



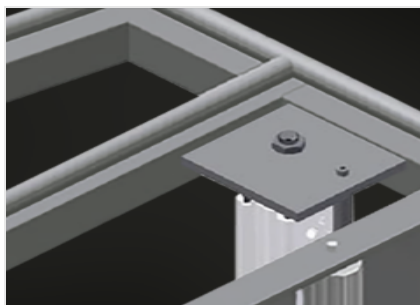
### Clamps

Two clamps at the side for fixing the window element in place. Laterally adjustable with hand lever valve. Max. profile clamping height 150 mm



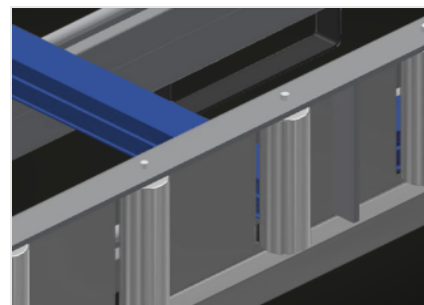
### Foot switch

Control via foot valve, Pneumatic horizontal/vertical tilting; height adjustable pneumatically by 500 mm in the vertical position



### Auxiliary clamps (Optional)

Auxiliary clamps for KTH 3000 and KTH 4000. Auxiliary clamps provide extra security when working



### Profile protectors for support rollers (Optional)

Profile protectors for support rollers 200 mm (Alum./16 x and Alum./21 x). Roller conveyor with protective tubing over the rollers to protect the window element during infeed and outfeed



### **Pull-out profile support (Optional)**

Pull-out table support at top for KT/KTH 3000 and KT/KTH 4000. The table support can be pulled out 500 mm at the top for high frames



### **Brush strip (Optional)**

Supporting surfaces with brush strip



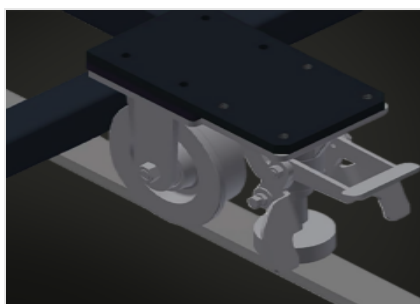
### **Felt strip (Optional)**

Supporting surfaces with felt strip



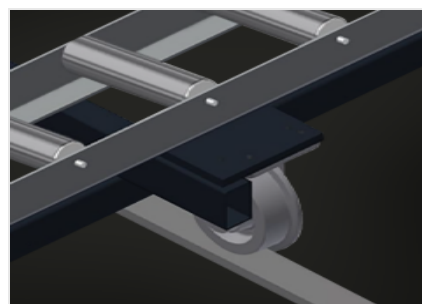
### **Rubber strips (Optional)**

Supporting surfaces with rubber-knob profile



### **Mobility unit (Optional)**

Mobility unit for KT/KTH/MS/VE.  
Mobility unit with flanged rollers and fixing brake



### **Rails (Optional)**

Rails, 2.0 m, left and right

**KTH 4000 / ASSEMBLY TABLES****DIMENSION AND WEIGHT**

Length (mm)	4.000
Width (mm)	1.820
Vertical height (mm)	1.900
Roller conveyor width (mm)	200
Weight (kg)	380

**SUPPORTING SURFACE**

Pneumatic height adjustment (mm)	500
Pneumatic vertical height adjustment	●
Pneumatic tilting	●
Extendable table support	○
Table brush strip supporting surface	○
Table felt profile strip supporting surface	○
Table rubber knob profile	○
Profile protectors for support rollers	○
Load capacity (kg)	200

**CHARACTERISTICS**

Pneumatically lowerable lateral clamps	2
Additional clamps	○
4-fold compressed air supply	●
Mobility unit	○
Rail 2,0 m left and right	○
Operating air pressure (bar)	7
Air consumption approx. (l/min)	35

Included ● Available ○