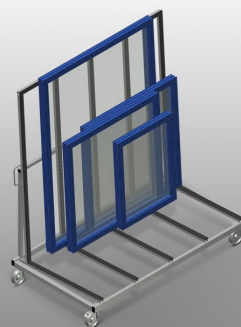
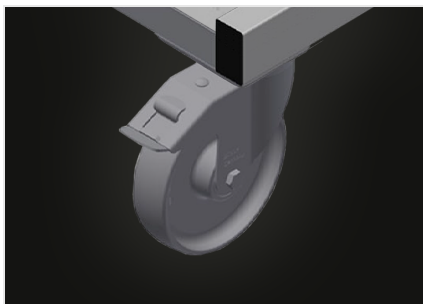


KW 1

Transport and trolleys

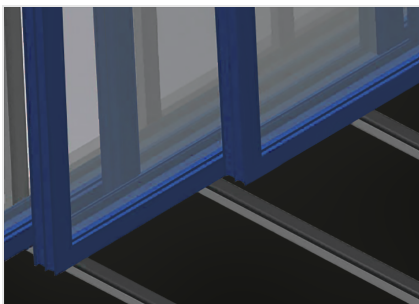


Commissioning trolley for in-house transportation of window elements. Stable steel construction. For in-house transportation. Profile supports with rubber surface. Four castors, two of which have a fixing brake.



Casters

Four casters, two of which have a fixing brake, provide a high degree of mobility and easy, safe handling



Supports with rubber strip

Supporting surfaces equipped with rubber strips to protect profiles from damage



Transport handles

Transport handle on both sides for mobility

KW 1 / TRANSPORT AND TROLLEYS**CHARACTERISTICS**

Length (mm)	1.690
Width (mm)	910
Height (mm)	1.768
Weight (kg)	100
Load capacity (kg)	400
Swivel castors diameter (mm)	125
Swivel castors	4
Swivel castors with locking stop	2

Included ● Available ○