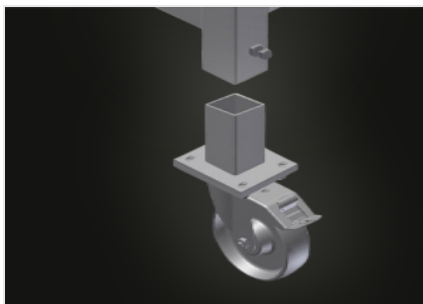


KW 2

Transport and trolleys

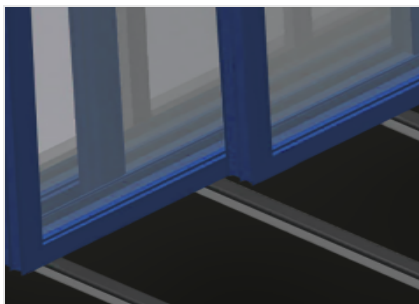


Commissioning trolley for in-house and truck transportation of window elements. Stable steel construction. Trolley for in-house and external transportation. Openings for forklift transportation. Four hooks for crane transportation. Four lashing strap attachment points. Profile supports with rubber surface. Castors can be removed for increased stability of the commissioning trolley in a lorry. Four swivel castors, two of which with locking stop.



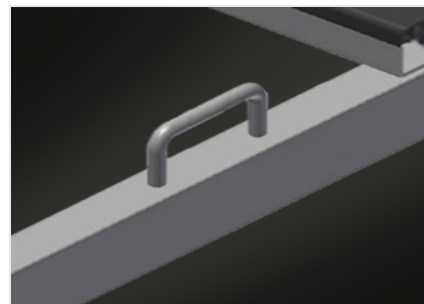
Removable casters

Casters can be removed for increased stability of the commissioning trolley in a lorry. Four casters, two of which have a fixing brake, provide a high degree of mobility and easy, safe handling



Supports with rubber strip

Supporting surfaces equipped with rubber strips to protect profiles from damage



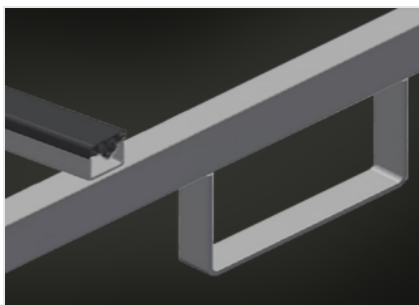
Lashing strap attachment points

With four lashing strap attachment points



Crane attachment points

Equipped with four crane attachment points



Forklift openings

Equipped with four forklift openings

KW 2 / TRANSPORT AND TROLLEYS
DIMENSION AND WEIGHT

| | |
|-------------|-------|
| Length (mm) | 2.025 |
| Width (mm) | 1.090 |
| Height (mm) | 1.880 |
| Weight (kg) | 130 |

STORAGE CAPACITY

| | |
|----------------------|-------|
| Load capacity (kg) | 600 |
| Effective width (mm) | 800 |
| Support height (mm) | 1.500 |

CHARACTERISTICS

| | |
|---|-----|
| Openings for forklift transportation | ● |
| Hooks for crane transportation | 4 |
| Lashing strap attachment points | 4 |
| Trolley also for external transportation | ● |
| Castors can be removed for commissioning trolley in a lorry | ● |
| Swivel castors | 4 |
| Swivel castors with locking stop | 2 |
| Swivel castors diameter (mm) | 125 |

Included ● Available ○