

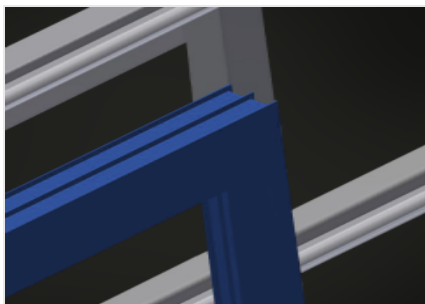


MS

Assembly tables



Assembly table for vertical assembly. Stable steel construction. Ideal for vertical assembly. Suitable for lines. Infinitely variable intermediate positions for ergonomic working. Height adjustment by means of pneumatic cylinder. Roller support with steel rollers. Table supporting surface with plastic slide bars. Two horizontally adjustable profile clamps. 4-fold compressed air supply.



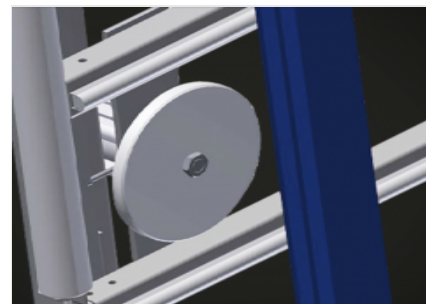
Supporting surfaces

Supporting surfaces with plastic slide bars



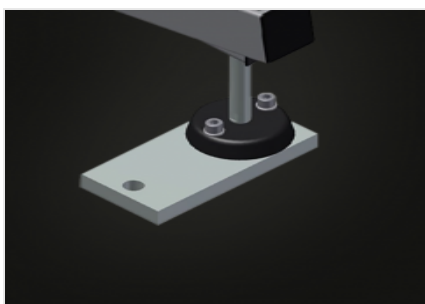
Roller support

Lower roller conveyor with support roller, L = 200 mm



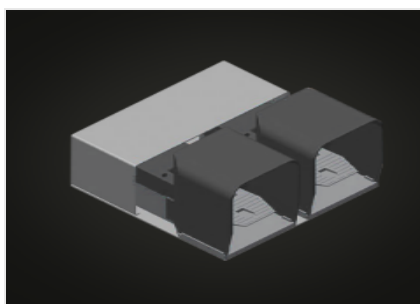
Clamps

Two material clamps at the side fix the profile while working, profile clamping height, max. 200 mm



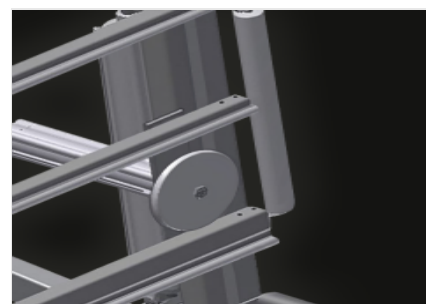
Height adjustment

Adjustable height, working height can be set by means of adjustable feet



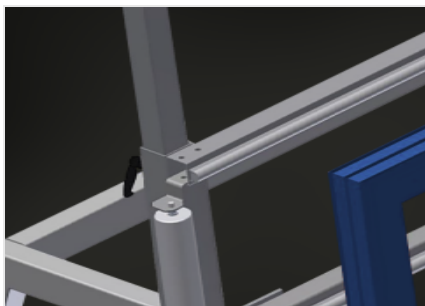
Foot switch

Control via foot valve. Height adjustable pneumatically by 500 mm in the vertical position, clamping is pneumatic



Lead-in rollers

Protective rollers for beginning or end of roller conveyor



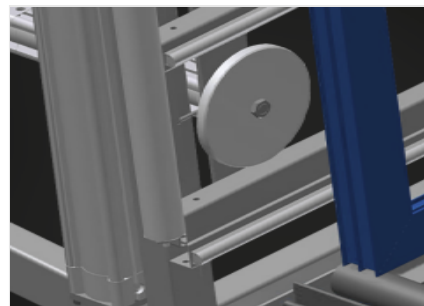
Pull-out profile support (Optional)

The table support can be pulled out at the top for MS 3000 and MS 4000 by 800 mm and 500 mm to accommodate high frames



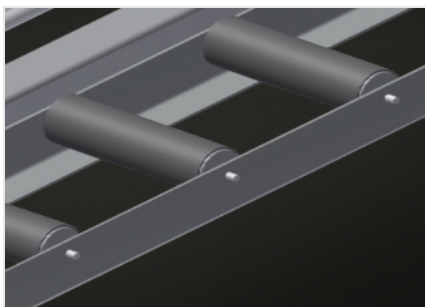
Holder plate for screw driving unit (Optional)

Tool rack for pneumatic tools



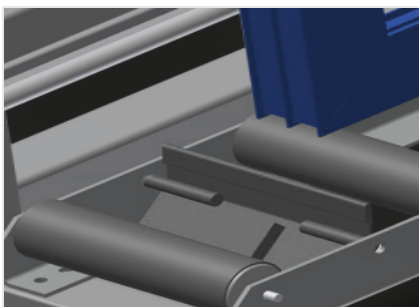
Positionable profile clamps (Optional)

Auxiliary clamps provide extra security when working



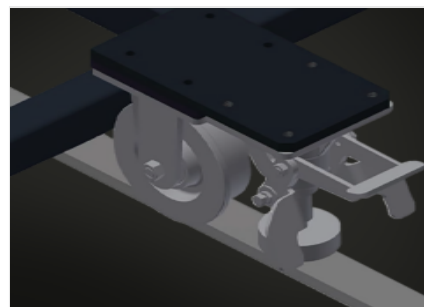
Profile protectors for support rollers (Optional)

Profile protectors for support rollers, 200 mm (Alum./16 x and Alum./21 x), roller conveyor with protective tubing over the rollers to protect the window element during infeed and outfeed



End stop (Optional)

End stop L = 200



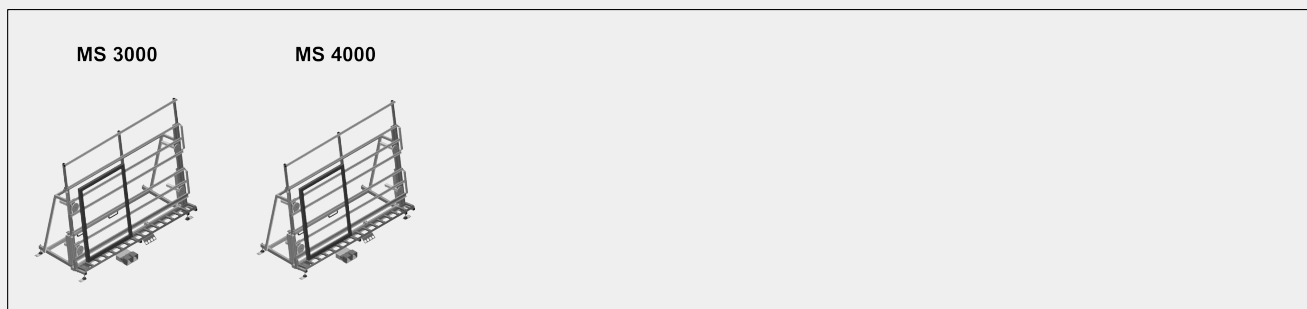
Mobility unit (Optional)

Mobility unit for KT/KTH/MS/VE. Mobility unit with flanged rollers and fixing brake



MS / ASSEMBLY TABLES

MODELS



DIMENSION AND WEIGHT

MS 3000 / MS 4000

| | |
|----------------------------|---------------|
| Length (mm) | 3.110 / 4.110 |
| Width (mm) | 1.200 |
| Vertical height (mm) | 2.050 |
| Roller conveyor width (mm) | 200 |
| Weight (kg) | 330 / 370 |

SUPPORTING SURFACE

| | |
|--|----------------------------------|
| Pneumatic height adjustment (mm) | 500 |
| Pneumatic vertical height adjustment | <input checked="" type="radio"/> |
| Pull-out profile support | <input type="radio"/> |
| Profile protectors for support rollers | <input type="radio"/> |
| Load capacity (kg) | 300 |



CHARACTERISTICS

| | |
|--|----------------------------------|
| Horizontally adjustable profile clamps | 2 |
| Positionable profile clamps | <input type="radio"/> |
| Holder plate L=290 mm | <input type="radio"/> |
| End stop | <input type="radio"/> |
| 4-fold compressed air supply | <input checked="" type="radio"/> |
| Mobility unit | <input type="radio"/> |
| Rail 2,0 m left and right | <input type="radio"/> |
| Operating air pressure (bar) | 7 |
| Air consumption approx. (l/min) | 35 |

Included ● Available ○