



## PWS

### Transport and trolleys



Profile trolley for vertical storage and transportation of aluminium profiles. Stable steel construction. Ideal for transportation and space-saving intermediate storage of cut-to-length profiles. Easy loading and unloading. Compartment divider height is adjustable. Four swivel castors, two of which with locking stop.

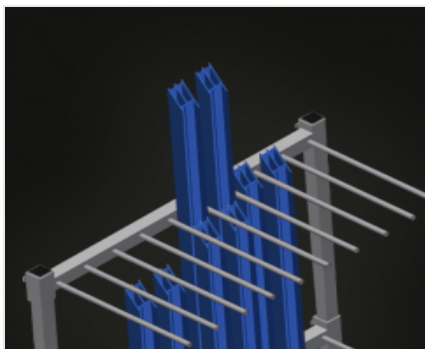
PWS 1000: Vertical profile transportation. Profile trolley with loading on one side. Sufficient for 30-40 profile bars. Supporting surface with bar grid floor.

PWS 1400: Vertical profile transportation. Sufficient for 30-40 profile bars. Lower supporting surface with rubber strips. Compartment dividers with protective tubing. Rear back support with rubber strips.

PWS 1800: Vertical profile transportation. Sufficient for 12-60 profile bars. Lower supporting surface with rubber strips. Compartment dividers with protective tubing. Rear back support with rubber strips.

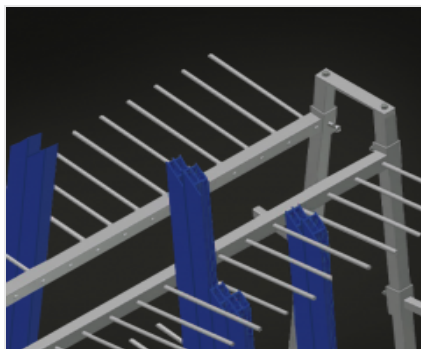
PWS 2000: Vertical profile transportation. Profile trolley with loading on one side. Sufficient for 60-80 profile bars. Supporting surface with bar grid floor.

PWS 4000: Vertical profile transportation. Profile trolley can be loaded on both sides. 18 compartments per side. Sufficient for 120-160 profile bars. Supporting surface with bar grid floor.



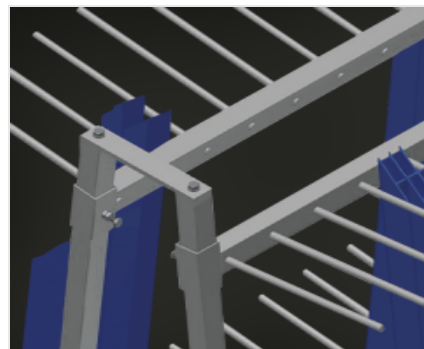
**Easy loading and unloading  
PWS 1000 / PWS 2000**

Profile trolley with loading on one side



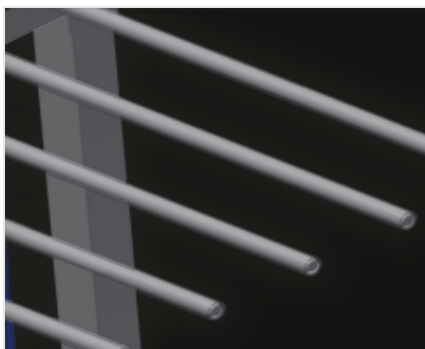
**Easy loading and unloading PWS 4000**

Profile trolley with loading on two sides



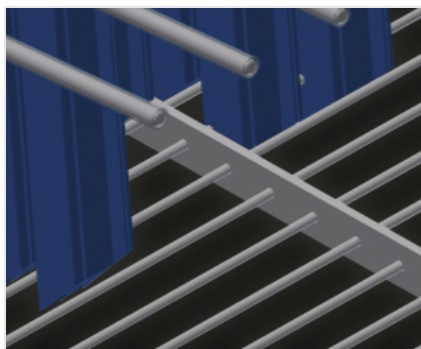
**Compartment dividers  
PWS 4000**

Compartment divider height is adjustable. Compartment width 100 mm. Compartment depth 400 mm



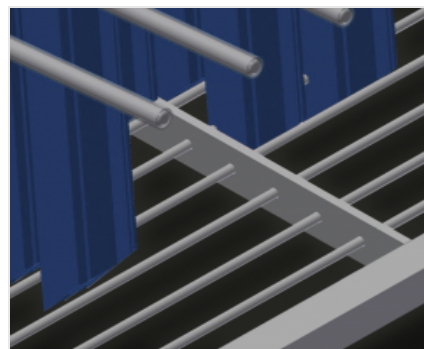
**Compartment divider with plastic protector  
PWS 1400 / PWS 1800**

Compartment divider height is adjustable. All supporting surfaces have a non-slip PVC cladding which protects surfaces from damage during storage



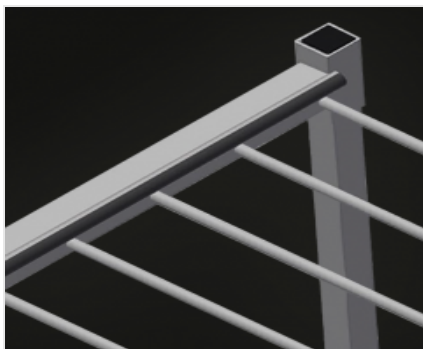
**Supporting surface  
PWS 1000 / PWS 2000**

Supporting surface with bar grid floor



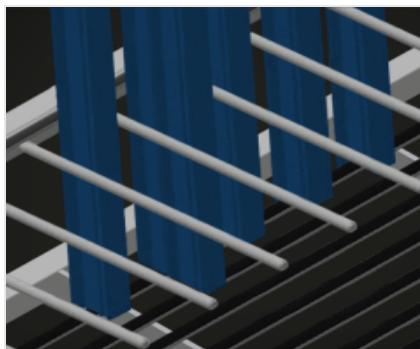
**Supporting surface  
PWS 4000**

Supporting surface with bar grid floor



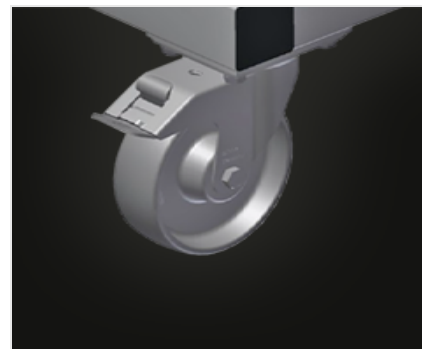
**Back support with rubber strips**  
**PWS 1400 / PWS 1800**

Rear supporting surfaces equipped with rubber strips protect profiles from damage



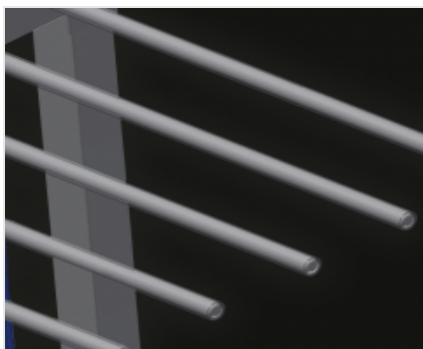
**Lower supporting surfaces with rubber strips**  
**PWS 1400 / PWS 1800**

Lower supporting surfaces equipped with rubber strips to protect the profiles from damage



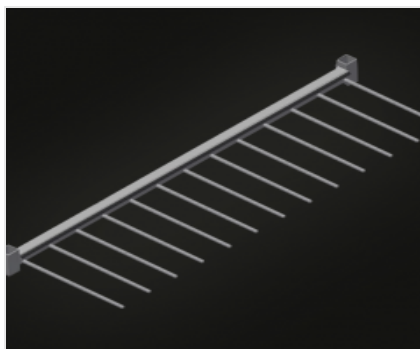
**Casters**

Four casters, two of which have a fixing brake, provide a high degree of mobility and easy, safe handling



**Plastic protector**  
**PWS 1000 / PWS 2000 / PWS 4000 (Optional)**

All supporting surfaces have a non-slip PVC cladding which protects surfaces from damage during storage



**Additional compartment divider**  
**PWS 1800 (Optional)**

Additional compartment divider with height adjustment and plastic protector

**MODELS**

**DIMENSION AND WEIGHT**
**PWS 1000 / PWS 1400 / PWS 1800 / PWS 2000 / PWS 4000**

Length (mm)	1.200 / 1.440 / 1.880 / 2.230 / 2.230
Width (mm)	800 / 790 / 800 / 800 / 1.560
Height (mm)	1.360 / 1.360 / 1.700 / 1.360 / 1.850
Weight (kg)	60 / 72 / 105 / 105 / 200

**STORAGE CAPACITY**
**PWS 1000 / PWS 1400 / PWS 1800 / PWS 2000 / PWS 4000**

Compartment dividers	2 / 2 / 2 / 2 / 4
Compartments	9 / 9 / 12 / 18 / 36
Compartment width (mm)	100 / 120 / 120 / 100 / 100
Compartment depth (mm)	540 / 540 / 540 / 540 / 400
Support height (mm)	1.150 / 1.150 / 1.500 / 1.150 / 1.620
Load capacity (kg)	350 / 350 / 350 / 350 / 600
Quantity of profile bars	30-40 / 30-40 / 12-60 / 60-80 / 120-160

**PWS 4000**

Compartments per side	18
-----------------------	----



CHARACTERISTICS

**PWS 1000 / PWS 1400 / PWS 1800 / PWS 2000**

Profile trolley with loading on one side ●

**PWS 4000**

Profile trolley can be loaded on both sides ●

**PWS 1000 / PWS 2000 / PWS 4000**

Supporting surface with bar grid floor ●

Compartment dividers with protective tubing ○

**PWS 1400 / PWS 1800**

Compartment dividers with protective tubing ●

Lower supporting surface with rubber strips ●

Rear back support with rubber strips ●

**PWS 1800**

Additional height adjustable compartment divider with plastic protection ○

**PWS 1000 / PWS 1400 / PWS 1800 / PWS 2000 / PWS 4000**

Swivel castors diameter (mm) 125

Included ● Available ○