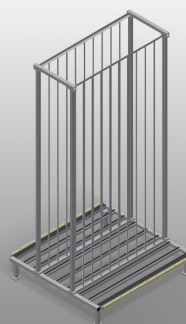
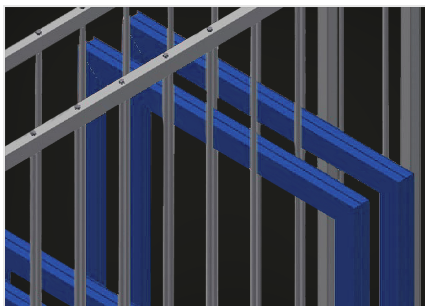


## ***RFR 10/01***

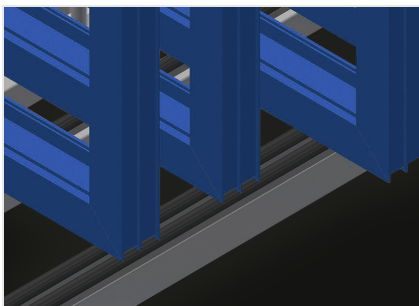
### Rack systems



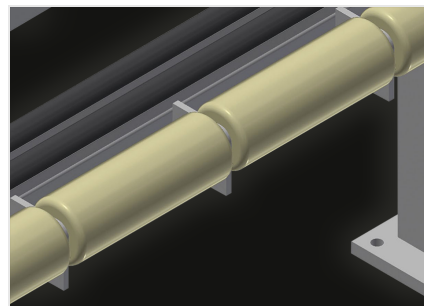
Rack for storage of frame elements. Stable steel construction. Rack for storage of frames. The individual elements are available for direct access. Specially designed for integration in assembly lines. Access is possible from both sides. Floor support equipped with knob profile. Compartment separating bars covered with protective tubing. Supporting surface with rollers for even easier loading and unloading.

**Compartments**

All supporting surfaces have a non-slip PVC cladding which protects surfaces from damage during storage

**Supports**

Lower supporting surfaces with knob profile to protect profiles from damage

**Rollers**

Rollers are mounted to every compartment for even easier loading and unloading of heavy or large elements

## CHARACTERISTICS

Length (mm)	1.650
Width (mm)	1.620
Height (mm)	3.375
Compartments	10
Compartment width (mm)	130
Compartment height (mm)	3.010
Weight (kg)	250
Load capacity (kg)	800
Floor support equipped with knob profile	●
Compartment separating bars covered with protective tubing	●
Supporting surface with rollers	●

Included ● Available ○