

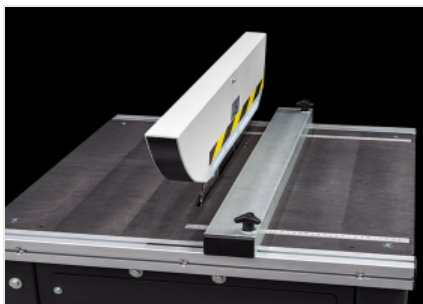


## *BS 350*

Complementary machines



Single-head trimming machine with rising blade, for extruded profiles and flat sheets of aluminium. The especially rugged structure allows well defined and accurate cutting and ensures perfect parallelism between the profiles faces. Furthermore it can be equipped with profile support roller conveyors to increase its versatility. The blade guard is designed and built to work under the best safety conditions.



### Adjustable stop

Referring to the centreline of the blade, it allows the area to be removed to be quickly defined.



### Graduated scale

It allows the height of the blade relative to the horizontal support surface to be mechanically fixed in relation to the thickness of the material to be sectioned.



### Cutting zone

The sturdy and wide horizontal cast-iron support surface makes up the work area, which features a large footprint that enables the processing of both profiles and flat aluminium sheets.

**BS 350 / COMPLEMENTARY MACHINES****BLADE**

Made of Widia (mm)

Ø = 350

**BLADE FEED**

Maximum trimming height (mm)

120

**CUTTING AREA PROTECTION**

Local, manually adjusted

●

**LUBRICATION SYSTEM**

Micro-mist lubrication system with water and oil emulsion

○

**MOTOR**

Three-phase brake motor

●

Brake intervention time (s)

10

Power (kW)

1,5

Included ●    Available ○