



## VR 4000 DF

### Vertical Rollers Conveyors



Stable steel construction. Vertical roller conveyor for smooth transportation to the next work task as well as for transportation to storage and sorting of the finished windows. Easy handling of window elements. Every roller conveyor unit is 4.000 mm long. Plastic slide bars top and bottom. Three mini-roller conveyors with rubber rollers, diameter 50 mm. Basic unit with end rack. Vertical roller conveyor on rails with flanged rollers, mobile. Roller conveyor can be rotated 360°.



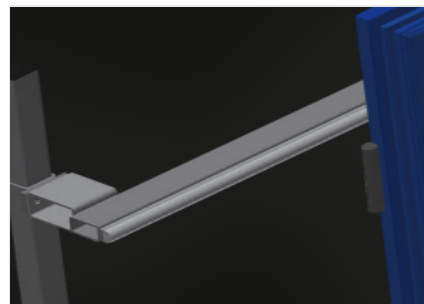
### Support rollers

Rollers throughout, support roller width 200 mm



### Mini-roller conveyor

Three mini-roller conveyors with rubber rollers, diameter 50 mm



### Back support

Rear back support with plastic slide bars, top and bottom



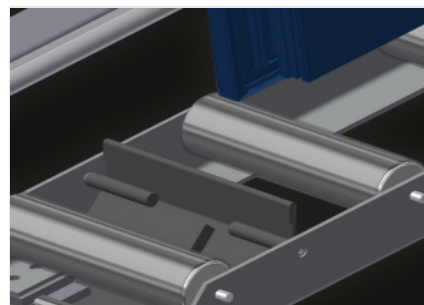
### Grip

Grip makes pushing the roller conveyor on the rails easy



### Mobility unit

Mobility unit with flanged rollers and fixing brake



### End stop (Optional)

End stop L = 200 mm



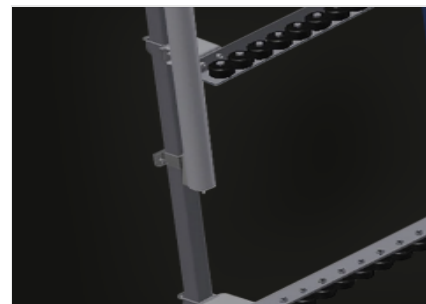
**Lead-in rollers  
(Optional)**

Protective rollers for beginning or end  
of roller conveyor: - L = 500 mm (pair)  
- L = 250 mm (pair)



**Profile protectors  
(Optional)**

Profile protectors for support rollers  
200 mm (Alum./11 x and Alum./16 x).  
Support rollers covered with protective  
tubing



**Additional mini-roller  
conveyors (Optional)**

Additional mini-roller conveyors with  
rubber rollers top/bottom



**Rails (Optional)**

Rails, 2.0 m, left and right



**VR 4000 DF / VERTICAL ROLLERS CONVEYORS**

**DIMENSION AND WEIGHT**

|                           |       |
|---------------------------|-------|
| Length (mm)               | 4.000 |
| Width (mm)                | 1.000 |
| Height (mm)               | 2.490 |
| Support roller width (mm) | 200   |
| Support height (mm)       | 2.100 |
| Weight (kg)               | 220   |

**CHARACTERISTICS**

|   |     |
|---|-----|
| Load capacity (kg)  | 200 |
| Mini-roller conveyors with rubber rollers, diameter 50 mm       | 3   |
| Basic unit with end rack  | ●   |
| Vertical roller conveyor on rails with flanged rollers mobile   | ●   |
| Roller conveyor can be rotated 360°                             | ●   |
| Lead-in rollers L= 500 mm (pair)                                | ○   |
| Lead-in rollers L= 250 mm (pair)                                | ○   |
| Additional mini-roller conveyors with rubber rollers top/bottom | ○   |
| Profile protectors for L= 200 mm                                | ○   |
| End stop L= 200 mm  | ○   |
| Rail 2,0 m left and right                                       | ○   |

Included ● Available ○