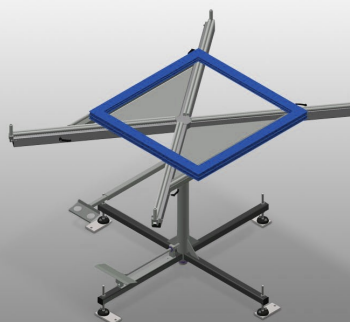


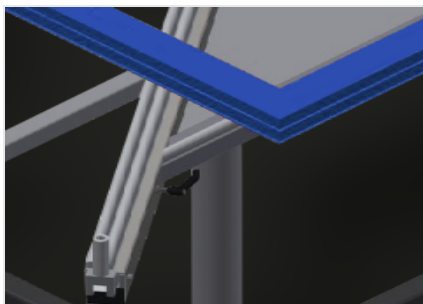


## *DT 1000*

### Assembly tables

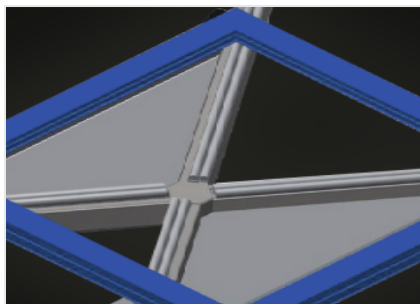


Rotating table for all work tasks on frames and sashes. Stable steel construction. Rotating work table. Versatile work table for all applications, e.g. for assembly tasks, as a work table for gasket insertion, for the post-processing of special-order production items, for hardware assembly as well as for final assembly. Four continuously adjustable pull-out support arms. Support arms are rubber coated. Table surface can be rotated 360° and locked using pedal. With practical storage tray and practical tool tray.



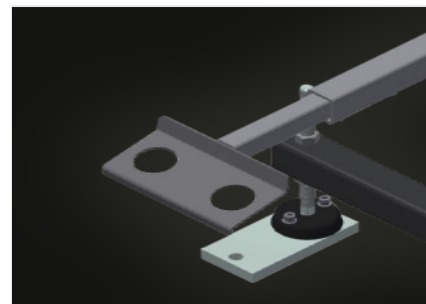
### Supporting surfaces

Support arms are rubber coated



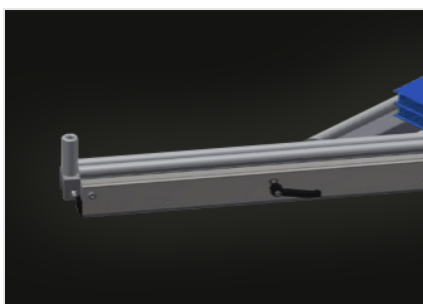
### Storage area

Practical storage for small accessories, hardware and screws



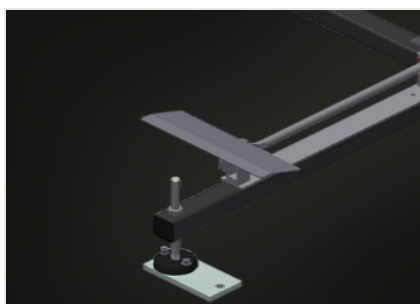
### Tool rack

Tool rack for pneumatic or electrical tools



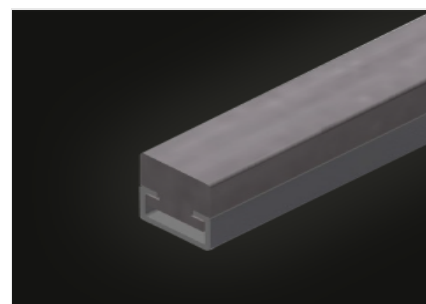
### Support arms

Four pivoting and continuously adjustable pull-out support arms



### Pedal brake

Table surface can be rotated 360°, foot brake for locking the rotation



### Felt surface (Optional)

Felt strip

## DT 1000 / ASSEMBLY TABLES

## DIMENSION AND WEIGHT

Length (mm)	700 ÷ 1.000
Height (mm)	900
Weight (kg)	110

## SUPPORTING SURFACE

Storage tray for setting down tools and accessories	<input checked="" type="radio"/>
Rubber coated support arms	<input checked="" type="radio"/>
Felt surface	<input type="radio"/>

Included ☒ Available ☐