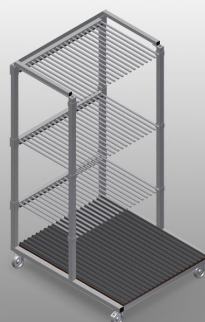
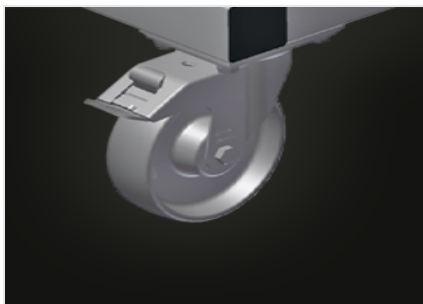


GFW 1200

Transport and trolleys

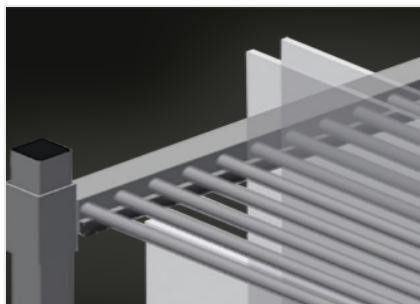


Stable steel construction. Ideal for sorting glass. Hardwood supporting surface with felt. Compartment dividers for 20 sheets of glass. Compartment dividers height is adjustable. Four swivel castors, two of which with locking stop.



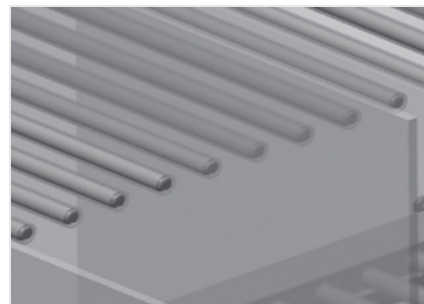
Casters

Four casters, two of which have a fixing brake, provide a high degree of mobility and easy, safe handling



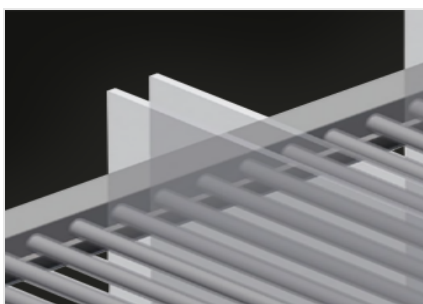
Compartment divider with plastic protection

Compartment divider height is adjustable. All supporting surfaces have a non-slip PVC cladding which protects sheets of glass from damage during storage



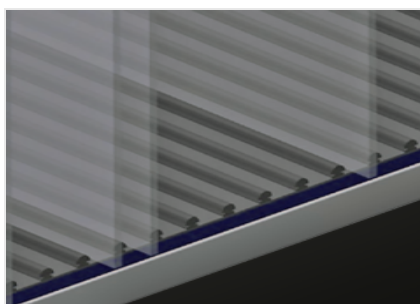
Easy loading and unloading

Well-organised storage provides quick access



Back support with rubber strips

Rear supporting surfaces equipped with rubber strips protect sheets of glass from damage



Bottom supporting surface of wood with felt

Lower supporting surface covered with felt. Additional plastic strips on the floor

**GFW 1200 / TRANSPORT AND TROLLEYS****DIMENSION AND WEIGHT**

Length (mm)	1.200
Width (mm)	1.400
Height (mm)	2.270
Weight (kg)	210

STORAGE CAPACITY

Compartments	20
Clearance (mm)	30
Load capacity (kg)	800

CHARACTERISTICS

Swivel castors	4
Swivel castors with locking stop	2
Swivel castors diameter (mm)	120

Included ● Available ○