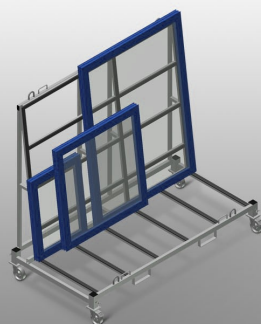
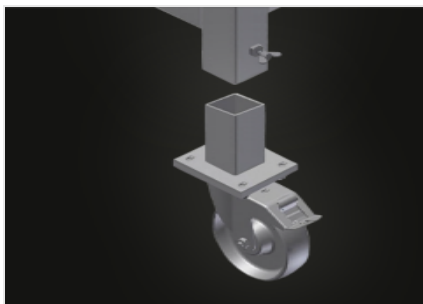


## *KW 4*

### Transport and trolleys

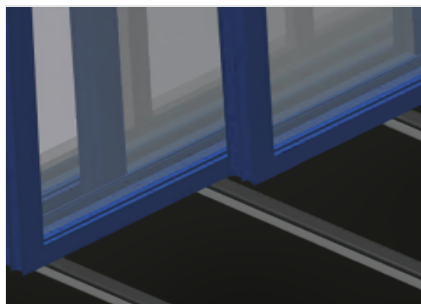


Commissioning trolley for in-house transportation of window elements. Stable steel construction. Trolley for in-house transportation. Openings for forklift transportation. Four hooks for crane transportation. Four lashing strap attachment points. Profile supports with rubber surface. Castors can be removed for increased stability of the commissioning trolley. Four swivel castors, two of which with locking stop.



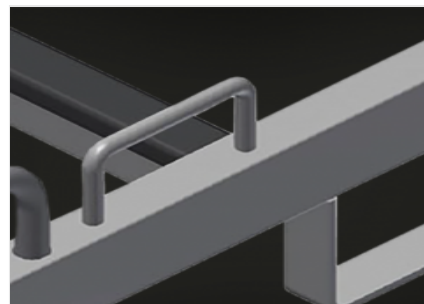
### Removable casters

Casters can be removed for increased stability of the commissioning trolley on the floor. Four casters, two of which have a fixing brake, provide a high degree of mobility and easy, safe handling



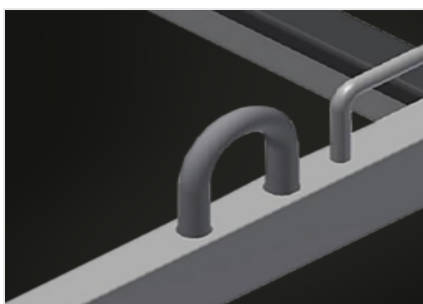
### Supports with rubber strip

Supporting surfaces equipped with rubber strips to protect profiles from damage



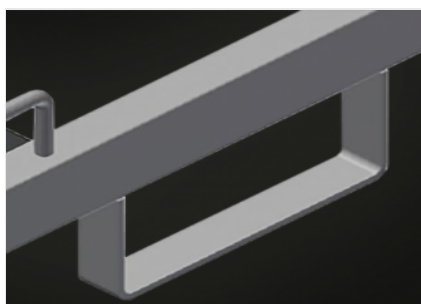
### Lashing strap attachment points

With four lashing strap attachment points



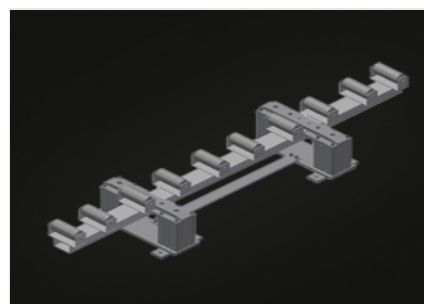
### Crane attachment points

Equipped with four crane attachment points



### Forklift openings

Equipped with four forklift openings



### Lifting station (Optional)

HBR 1600 Lifting station for the transfer of heavy windows to the transport trolley KW 4

**KW 4 / TRANSPORT AND TROLLEYS****DIMENSION AND WEIGHT**

Length (mm)	2.000
Width (mm)	1.000
Height (mm)	1.850
Weight (kg)	150

**STORAGE CAPACITY**

Load capacity (kg)	500
--------------------	-----

**CHARACTERISTICS**

Openings for forklift transportation	●
Hooks for crane transportation	4
Lashing strap attachment points	4
Lifting station for the transfer of heavy windows	○
Swivel castors	4
Swivel castors with locking stop	2
Swivel castors diameter (mm)	125

Included ● Available ○