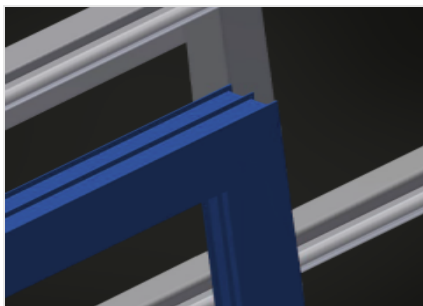


## *MS 4000*

### Assembly tables

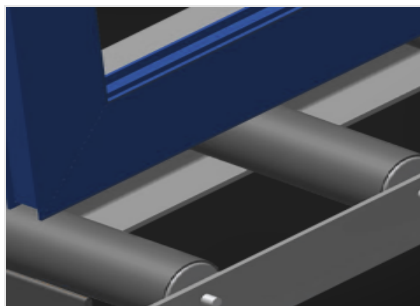


Assembly table for vertical assembly. Stable steel construction. Ideal for vertical assembly. Suitable for lines. Infinitely variable intermediate positions for ergonomic working. Height adjustment by means of pneumatic cylinder. Roller support with steel rollers. Table supporting surface with plastic slide bars. Two horizontally adjustable profile clamps. 4-fold compressed air supply.



### Supporting surfaces

Supporting surfaces with plastic slide bars



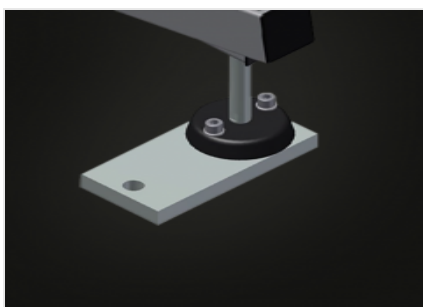
### Roller support

Lower roller conveyor with support roller, L = 200 mm



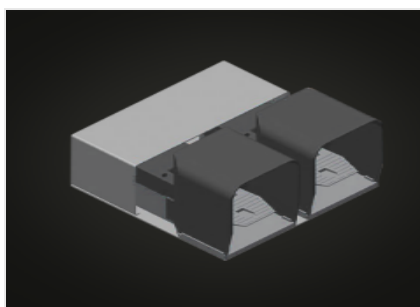
### Clamps

Two material clamps at the side fix the profile while working, profile clamping height, max. 200 mm



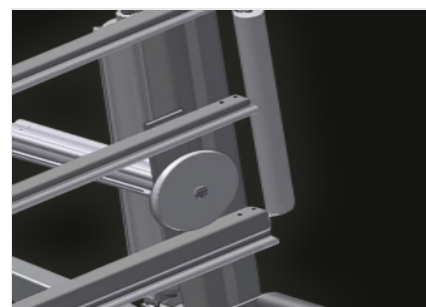
### Height adjustment

Adjustable height, working height can be set by means of adjustable feet



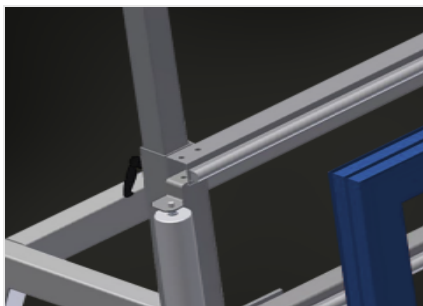
### Foot switch

Control via foot valve. Height adjustable pneumatically by 500 mm in the vertical position, clamping is pneumatic



### Lead-in rollers

Protective rollers for beginning or end of roller conveyor



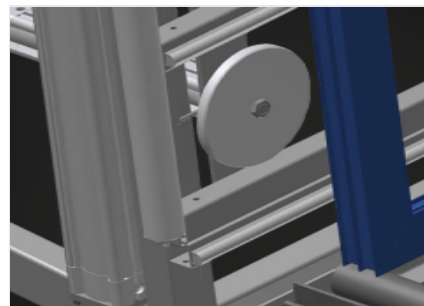
### **Pull-out profile support (Optional)**

The table support can be pulled out at the top for MS 3000 and MS 4000 by 800 mm and 500 mm to accommodate high frames



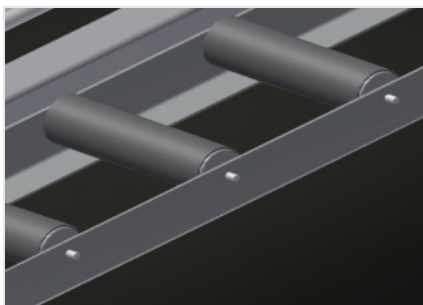
### **Holder plate for screw driving unit (Optional)**

Tool rack for pneumatic tools



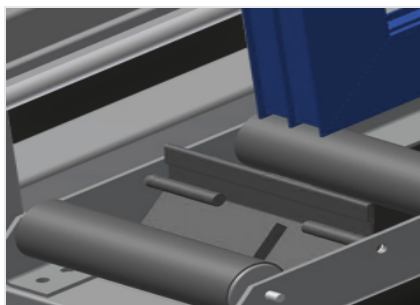
### **Positionable profile clamps (Optional)**

Auxiliary clamps provide extra security when working



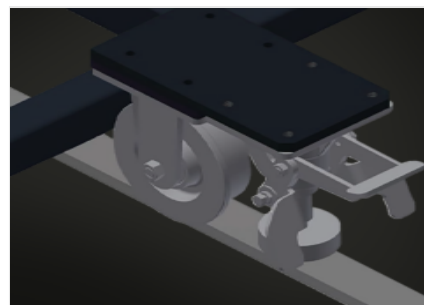
### **Profile protectors for support rollers (Optional)**

Profile protectors for support rollers, 200 mm (Alum./16 x and Alum./21 x), roller conveyor with protective tubing over the rollers to protect the window element during infeed and outfeed



### **End stop (Optional)**

End stop L = 200



### **Mobility unit (Optional)**

Mobility unit for KT/KTH/MS/VE.  
Mobility unit with flanged rollers and fixing brake

**MS 4000 / ASSEMBLY TABLES****DIMENSION AND WEIGHT**

Length (mm)	4.110
Width (mm)	1.200
Vertical height (mm)	2.050
Roller conveyor width (mm)	200
Weight (kg)	370

**SUPPORTING SURFACE**

Pneumatic height adjustment (mm)	500
Pneumatic vertical height adjustment	●
Pull-out profile support	○
Profile protectors for support rollers	○
Load capacity (kg)	300

**CHARACTERISTICS**

Horizontally adjustable profile clamps	2
Positionable profile clamps	○
Holder plate L=290 mm	○
End stop	○
4-fold compressed air supply	●
Mobility unit	○
Rail 2,0 m left and right	○
Operating air pressure (bar)	7
Air consumption approx. (l/min)	35

Included ● Available ○