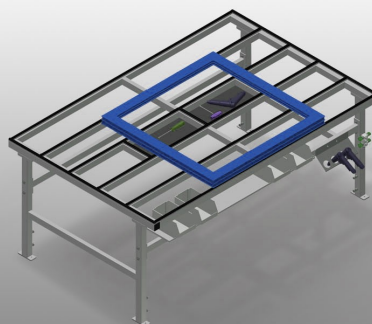


## *MST 2000*

### Assembly tables



Assembly table expandable for all work tasks on frames and sashes. Stable steel construction. Assembly table for all work tasks on frames and sashes. Horizontal frame transportation. Storage tray for setting down tools and accessories. Adjustable height. Table supporting surface with plastic slide bars. Simple installation with a modular system design.



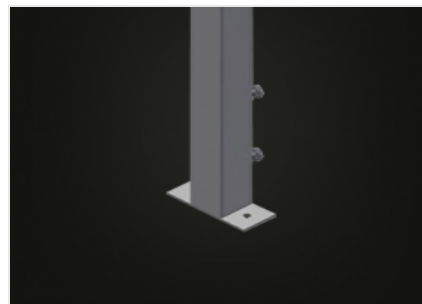
### Supporting surfaces

Supporting surfaces with plastic slide bars



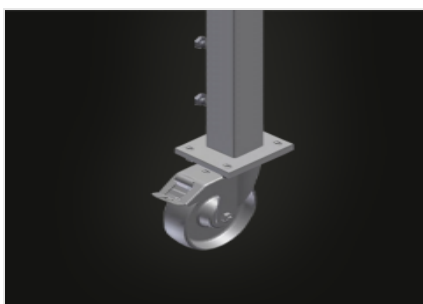
### Storage tray

Storage tray for setting down tools and accessories



### Height adjustment

Adjustable height; working height can be set to 850 - 1.000 mm by means of adjustable feet



### Castors (Optional)

Mobile unit: two casters with brake and two fixed rollers provide mobility in all directions



### Brush strip (Optional)

Supporting surfaces with brush strip



### Felt strip (Optional)

Supporting surfaces with felt strip

**MST 2000 / ASSEMBLY TABLES****DIMENSION AND WEIGHT**

|             |             |
|-------------|-------------|
| Length (mm) | 2.000       |
| Width (mm)  | 1.300       |
| Height (mm) | 850 ÷ 1.000 |
| Weight (kg) | 90          |

**SUPPORTING SURFACE**

|   |                                  |
|---|----------------------------------|
| Adjustable height                                   | <input checked="" type="radio"/> |
| Storage tray for setting down tools and accessories | <input checked="" type="radio"/> |
| Table brush strip supporting surface                | <input type="radio"/>            |
| Table felt profile strip supporting surface         | <input type="radio"/>            |
| Table rubber knob profile                           | <input type="radio"/>            |

**CHARACTERISTICS**

|  |                       |
|--|-----------------------|
| 4-fold compressed air supply                   | <input type="radio"/> |
| Castor wheel Stand Alone (2 castors + 2 fixed) | <input type="radio"/> |

Included ☒ Available ☐