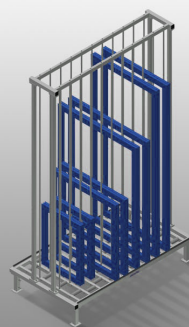


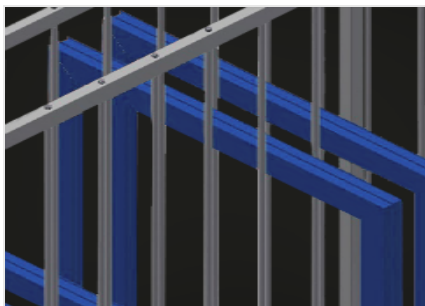


RFR 10

Rack systems

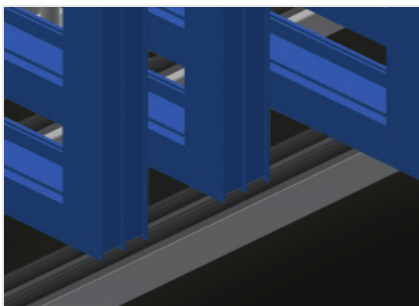


Rack for storage of frame elements. Stable steel construction. Rack for storage of frames. The individual elements are available for direct access. Specially designed for integration in assembly lines. Access is possible from both sides. Floor support equipped with knob profile. Compartment separating bars covered with protective tubing.



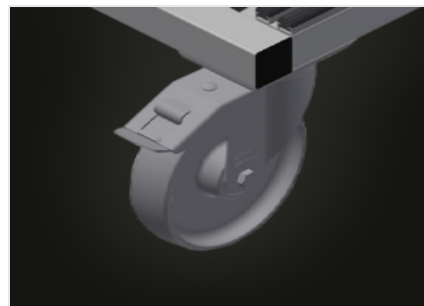
Compartments

All supporting surfaces have a non-slip PVC cladding which protects surfaces from damage during storage



Supports

Lower supporting surfaces with knob profile to protect profiles from damage



Castors, cmpl. (Optional)

Two casters with brake and two fixed rollers provide mobility in all directions, roller diameter 125 mm

RFR 10 / RACK SYSTEMS
DIMENSION AND WEIGHT

Length (mm)	1.650
Width (mm)	1.000
Height (mm)	2.965
Weight (kg)	230

STORAGE CAPACITY

Compartments	10
Compartment width (mm)	130
Compartment height (mm)	2.600
Load capacity (kg)	800

CHARACTERISTICS

Floor support equipped with knob profile	●
Compartment separating bars covered with protective tubing	●
Rollers and handle	○

Included ● Available ○