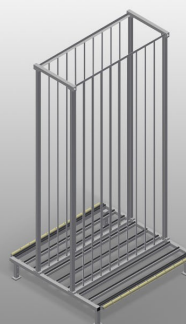


*RFR 10/02*

## Rack systems

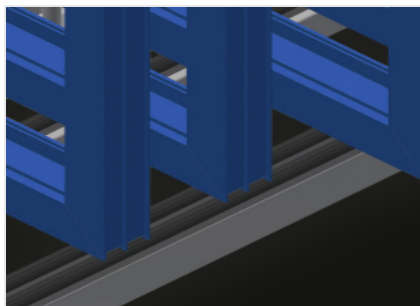


Rack for storage of frame elements. Stable steel construction. Rack for storage of frames. The individual elements are available for direct access. Specially designed for integration in assembly lines. Access is possible from both sides. Floor support equipped with knob profile. Compartment separating bars covered with protective tubing. Supporting surface with rollers for even easier loading and unloading.



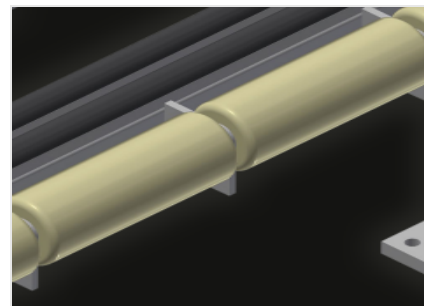
### Compartments

All supporting surfaces have a non-slip PVC cladding which protects surfaces from damage during storage



### Supports

Lower supporting surfaces with knob profile to protect profiles from damage



### Rollers

Rollers are mounted to every compartment for even easier loading and unloading of heavy or large elements

**DIMENSION AND WEIGHT**

Length (mm)	1.950
Width (mm)	1.620
Height (mm)	3.375
Weight (kg)	275

**STORAGE CAPACITY**

Compartments	10
Compartment width (mm)	160
Compartment height (mm)	3.010
Load capacity (kg)	800

**CHARACTERISTICS**

Floor support equipped with knob profile	●
Compartment separating bars covered with protective tubing	●
Supporting surface with rollers	●

Included ● Available ○