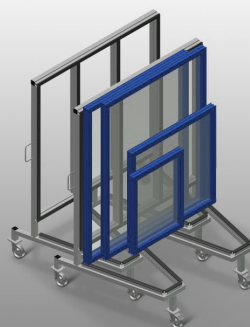
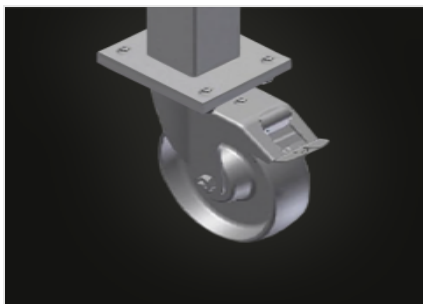


## ***KW 3***

### Transport and trolleys

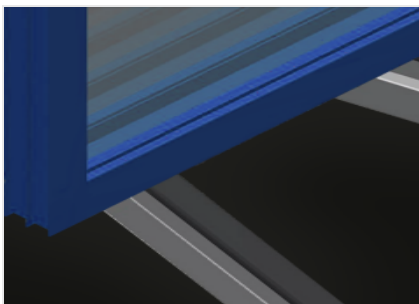


Commissioning trolley for in-house transportation of window elements. Stable steel construction. For in-house transportation. Profile supports with rubber surface. Can be nested when not loaded – a space-saving feature. Four swivel castors, two of which with locking stop.



### **Casters**

Four casters, two of which have a fixing brake, provide a high degree of mobility and easy, safe handling



### **Supports with rubber strip**

Supporting surfaces equipped with rubber strips to protect profiles from damage



### **Transport handles**

Transport handle on both sides for mobility

**KW 3 / TRANSPORT AND TROLLEYS**
**DIMENSION AND WEIGHT**

Length (mm)	1.600
Width (mm)	1.130
Height (mm)	1.960
Weight (kg)	90

**STORAGE CAPACITY**

Load capacity (kg)	400
--------------------	-----

**CHARACTERISTICS**

Horizontally stackable when not loaded	●
Swivel castors	4
Swivel castors with locking stop	2
Swivel castors diameter (mm)	125

Included ● Available ○